

BIOHORIZONS[®]

internal



Impression Technique Guide Internal Implant System

Science

Simplicity

Value

BIOHORIZONS[®]



Impression Technique - Indirect Transfer with the 3inOne Abutment / Ball-top Screw Combo

Procedure Objective: Make an impression for fabrication of a working cast utilizing a closed-tray, indirect transfer method when a regular emergence Healing Abutment has been used. The procedure creates a cast that represents the exact position of the implant as well as the orientation of the internal hex.

1 Clinical

Remove Healing Abutment



Remove the regular emergence Healing Abutment with the .050" (1.25mm) Hex Driver. Confirm that the implant's prosthetic platform is free of bone debris or soft tissue.

2 Clinical

Place transfer coping



Seat the 3inOne Abutment and secure it with a Ball-top Screw (hand-tighten).

If practical, orient the flat side of the abutment to the facial for easier indexing.

Radiographically verify correct seating of the coping.

3 Clinical

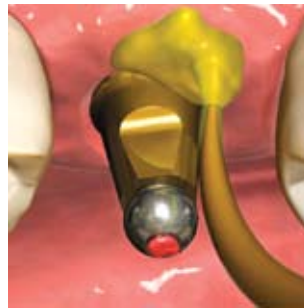
Block out hex hole



Block out the hex-hole on top of the Ball-top Screw with a material of choice.

4 Clinical

Make full-arch impression



Syringe a light-body elastomeric impression material around the coping assembly. Record the full arch impression using the closed tray loaded with heavier body impression material.

Remove the coping assembly after the tray has been removed. Replace the Healing Abutment immediately to prevent soft tissue collapse.

5 Clinical

Assemble coping and analog



Use the Ball-top Screw to assemble the 3inOne Abutment with the corresponding Implant Analog.

6 Clinical

Index coping into impression



Insert the coping assembly into the corresponding location in the impression, ensuring that the flat of the abutment aligns with the corresponding indice within the impression.

Send the impression, coping/analog assembly, abutment screw, bite registration and opposing model to the lab.

Lab Steps



Send to Lab

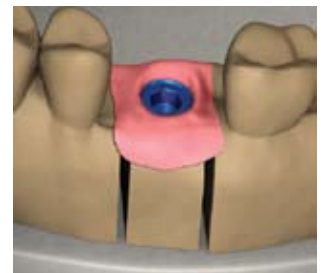
- Impression
- 3inOne/Ball-top Screw Combo
- Abutment Screw (comes with 3inOne)
- Implant Analog
- Bite Registration
- Opposing model or impression
- Shade selection

7. Create soft tissue model



A soft tissue replica material is recommended around the analog. Verify analog seating and apply lubricant where soft tissue replica material is to be applied.

8. Fabricate working cast



Fabricate a working cast. Articulate according to standard laboratory procedures.



Impression Technique - Indirect Transfer with the Indirect Transfer Coping

Procedure Objective: Make an impression for fabrication of a working cast utilizing a closed-tray, indirect transfer method. The procedure creates a cast that represents the exact position of the implant as well as the orientation of the internal hex.

1 Clinical

Remove Healing Abutment



Remove the Healing Abutment with the .050" (1.25mm) Hex Driver. Confirm that the implant prosthetic platform is free of bone debris or soft tissue.

The emergence of the impression coping selected should match the emergence of the Healing Abutment and the intended final abutment (either Narrow, Regular or Wide). Custom Cast emergence will be determined by the lab prescription.

2 Clinical

Place transfer coping



Seat the Indirect Transfer Coping and secure it with the included screw (hand-tighten).

If practical, orient the flat side of the coping to the facial for easier indexing.

Radiographically verify correct seating of the coping.

3 Clinical

Block out screw hole



Block out the screw access hole of the Indirect Transfer Coping with a material of choice.

4 Clinical

Make full-arch impression



Syringe a light-body elastomeric impression material around the coping assembly. Record the full arch impression using the closed tray loaded with heavier body impression material.

Remove the coping assembly after the tray has been removed. Replace the Healing Abutment immediately to prevent soft tissue collapse.

5 Clinical

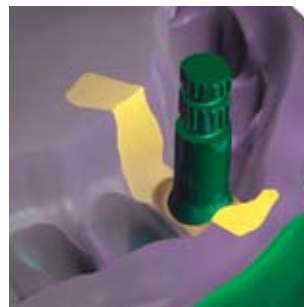
Assemble coping and analog



Assemble the Indirect Transfer Coping with the appropriate diameter Implant Analog using the included screw with the .050" (1.25mm) Hex Driver.

6 Clinical

Index coping into impression



Insert the coping assembly into the corresponding location in the impression, ensuring that the flat of the coping aligns with the corresponding indice within the impression.

Send the impression, coping/analog assembly, bite registration and opposing model to the lab.

Lab Steps

7. Create soft tissue model

8. Fabricate working cast



Send to Lab

- Impression with coping inside
- Coping Screw
- Implant Analog
- Abutment and Screw (if selected)
- Bite Registration
- Opposing model or impression
- Shade selection



A soft tissue replica material is recommended around the analog. Verify analog seating and apply lubricant where soft tissue replica material is to be applied.



Fabricate a working cast. Articulate according to standard laboratory procedures.



Impression Technique - Direct Pick-up

Procedure Objective: Make an impression for fabrication of a working cast utilizing an open-tray, direct pick-up method. The procedure creates a cast that represents the exact position of the implant. Hex orientation may be registered (single-unit) or bypassed (multiple-units) depending on the coping selected.

1 Clinical

Remove Healing Abutment



Remove the Healing Abutment with the .050" (1.25mm) Hex Driver. Confirm that the implant prosthetic platform is free of bone debris or soft tissue.

The emergence of the impression coping selected should match the emergence of the Healing Abutment and the intended final abutment (either Narrow, Regular or Wide). Custom Cast emergence will be determined by the lab prescription.

2 Clinical

Place transfer coping



Place the appropriate diameter Direct Pick-up Coping (either hexed or non-hexed) on the implant body and retain with the corresponding Direct Pick-up Coping Screw (hand-tighten).

These screws feature a knurled top to aid in manual insertion, as well as a .050" (1.25mm) hex access hole for insertion with the Hex Driver.

Radiographically verify correct seating of the coping.

3 Clinical

Verify tray/screw clearance



A stock impression tray may be modified for this procedure, or a custom tray may be fabricated using a tray material of choice. A window is cut out of the tray to allow clearance for the coping screw.

Try in the impression tray to verify that the coping screw protrudes through it without interference.

4 Clinical

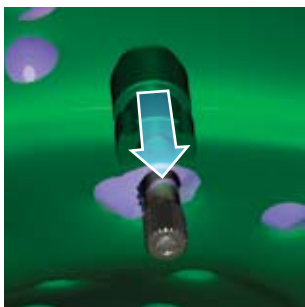
Make full-arch impression



Syringe a light-body elastomeric impression material around the coping assembly. Record the full arch impression with the tray loaded with heavier body impression material.

5 Clinical

Remove screw and impression



After the impression material has set, first remove the coping screw, and then remove the tray from the mouth. Verify that the impression material is completely adapted around the pick-up copings.

Replace the Healing Abutment immediately to prevent soft tissue collapse.

6 Clinical

Attach analog to impression coping



Assemble the appropriate diameter Implant Analog to the Direct Pick-up Coping with the coping screw.

Send the impression / coping assembly, bite registration and opposing model to the lab.

Lab Steps

7. Create soft tissue model

8. Fabricate working cast



Send to Lab

- Impression with coping inside
- Coping Screw
- Implant Analog
- Abutment and Screw (if chosen)
- Bite Registration
- Opposing model or impression
- Shade selection



A soft tissue replica material is recommended around the analog. Verify analog seating and apply lubricant where soft tissue replica material is to be applied.

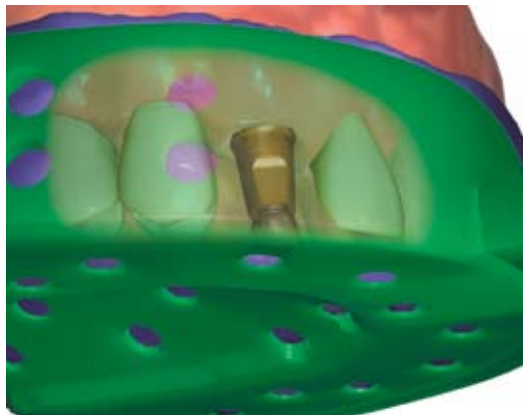


Fabricate a working cast. Articulate according to standard laboratory procedures.

Impression Technique - Overview

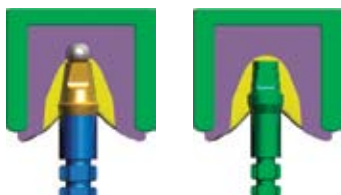
Procedure Objective: This guide provides you with 3 of the most common impression techniques using the BioHorizons Internal implant system. Additional impression techniques can be found in the BioHorizons Internal Prosthetic Manual, available for downloading from www.biohorizons.com or by contacting us at 888-246-8338.

Closed Tray (Indirect) Transfer

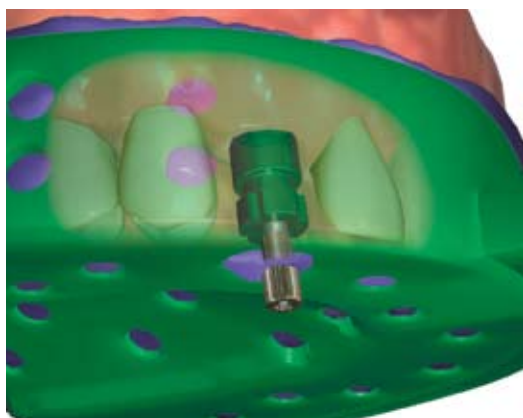


This indirect impression technique records the soft tissue profile as well as the implant's location. The implant's internal hex orientation is transferred when using the *3inOne* Abutment with a Ball-top Screw or any of the Indirect, Hexed (Closed Tray) Copings. *If the hex location is not needed for the prosthesis fabrication, the Direct Pick-up, Non-hexed (Open Tray) Coping may be used (described below).*

In this technique, the Indirect Transfer Coping remains in the mouth after the impression is removed from the mouth. The coping is then removed from the mouth and connected with the appropriate Implant Analog. The coping/ analog assembly is then indexed (transferred) into its corresponding position in the impression. A working model is poured in dental stone, providing a replica of the implant's location in the patient's mouth.



Open Tray (Direct) Pick-up



This impression technique records the soft tissue profile as well as the implant's location. The implant's internal hex orientation is transferred when using the Direct Pick-up Hexed (Open Tray) Copings. *If the hex location is not needed for the prosthesis fabrication, the Direct Pick-up Non-Hexed (Open Tray) Copings are used.*

In this technique, the Direct Pick-up Coping remains in the impression when it is removed from the mouth. For this technique, a custom tray or modified stock tray with a screw access hole in the area above the implant is required. The Direct Coping Screw that holds the Direct Pick-up Coping in place while the impression is made is removed through the access hole after the material sets. The impression is removed with the Direct Pick-up Coping embedded within the impression. The Implant Analog is connected to the embedded coping and a working model is poured in dental stone, providing a replica of the implant's location in the patient's mouth.



BioHorizons USA

One Perimeter Park South
Birmingham, AL 35243

Customer Care / Servicio al Cliente:
888-246-8338 or 205-967-7880

BioHorizons Canada

21 Amber Street, Unit # 7
Markham, Ontario L3R 4Z3

Customer Care / Service à la Clientèle:
866-468-8338 or / ou 905-944-1700

BioHorizons Ibérica

Bocángel, 38
28028 Madrid, España

Atención al Cliente:
+34 91 713 10 84

BioHorizons GmbH

Marktplatz 3
79199 Kirchzarten, Germany

Kunden Service:
+49 7661-909989-0

BioHorizons UK

180 Dukes Ride
Crowthorne, Berkshire

Customer Care:
+44 8700 620 550

BioHorizons products are cleared for sale in the European Union under the EU Medical Device Directive 93/42/EEC. We are proud to be registered to ISO 13485:2003, the international quality management system standard for medical devices, which supports and maintains our product licences with Health Canada and in other markets around the globe.

© 2007 BioHorizons Implant Systems, Inc. All Rights Reserved. ML0206 Rev A APR 2007

w w w . b i o h o r i z o n s . c o m